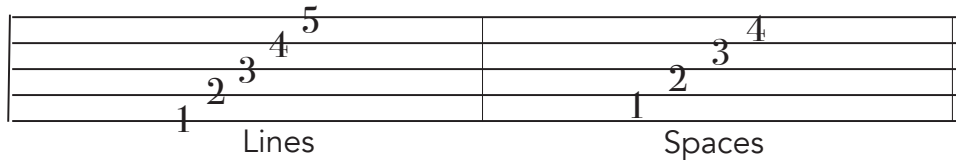
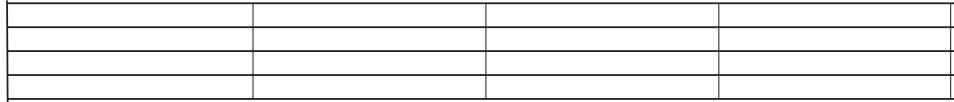


How to Read the Music Staff.

1.) The Staff has ___ Lines and ___ Spaces. We use the Staff's Lines + Spaces to name notes!



2.) Draw a Whole Note on **Line 2 + 5**. Draw a Whole Note on **Space 1 + 3**.



WHAT GOES ON THE STAFF:
Notes - We play notes for a certain duration of counts/seconds.
Rests - We count rests for a certain duration of counts/seconds.
Clefs are the Treble Clef for playing high notes. Bass Clef for playing low notes.
Time Signature is The top number shows how many counts are in each Measure. The bottom number 4 tells you the quarter note gets 1 count.
Bar Line is (|) Divides the Staff into Measures.
Double Bar Line is At the end of every piece. It tells you the piece is over.
Measure is Each Musical Box or Group of Notes on the Staff.

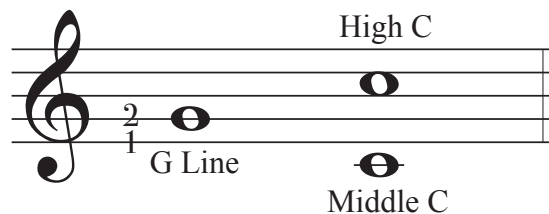
3.) ANALYZE THE STAFF

- *Go to #1. Circle each Bar Line, and put a box around the Double Bar Line .
- *How Many Measures do you see in the #2 Staff? _____.
- *Find a Time Signature in one of your pieces! What is the top + bottom number?

4.) MEMORIZE the Music Alphabet going up and down. ABCDEFG + GFEDCBA

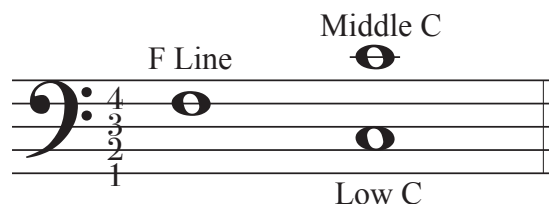
*To figure out the Note's Letter Name on the Staff, we go UP or DOWN the Music Alphabet. We use special LINES on the Staff to have a starting point.

5.) TREBLE CLEF- Right Hand, High Notes. G Line. High C.



Play each **Middle C**, **F line**, **G line**, **High C**, and **Low C**, 2-3x a day!

6.) BASS CLEF- Left Hand, Low Notes. F Line. Low C.



*Memorize each saying for the Treble + Bass Clef!